

# SIDE CORNER INBOUND

SHOWING A SCENARIO WHERE STUDENTS  
MUST TRACK MOVEMENT ON THE COURT

## WHY USE THIS PLAY

Even when in a difficult area in which to inbound the basketball, create movements to free your best shooter for an open look at the basket.

## SET UP

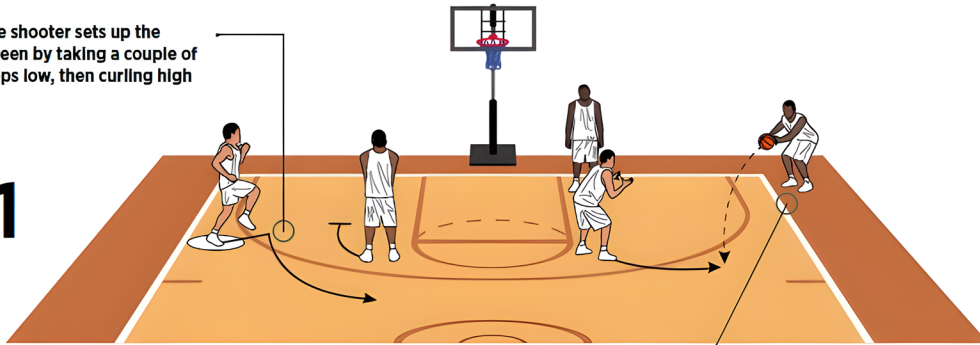
Inbounding from the corner is not easy as angles are limited. Have a skilled passer take the ball out of bounds. Position the best shooter on the weakside wing.

## HOW TO PLAY

The ball-side wing pops to catch the inbound pass while the player at the weak-side elbow downscreens for the shooter [1]. After inbounding, the passer sprints along the baseline and receives a screen from the post. After setting the weak-side downscreen, the screener rolls toward the basket. A pass is made from the right wing to the shooter. Following the pass, the right wing sets a ball screen for the shooter [2]. When defenses try to show the screen and recover it sometimes leads to the shooter having an open window to shoot [3].

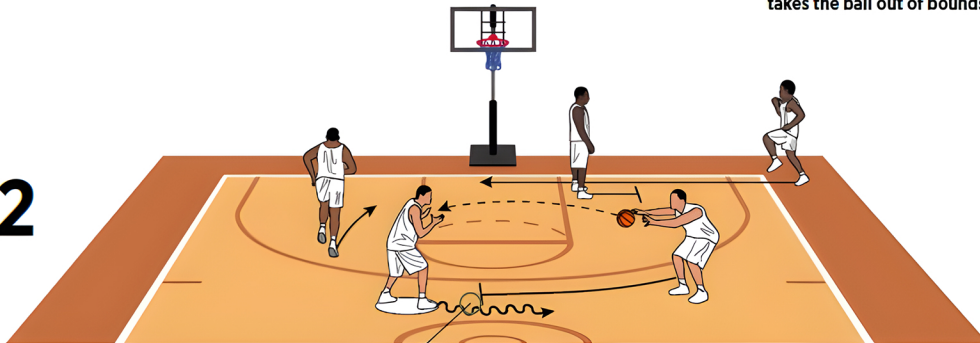
The shooter sets up the screen by taking a couple of steps low, then curling high

1



The corner is one of the most difficult places to inbound the ball. Be sure a smart player who knows how to survey the floor takes the ball out of bounds

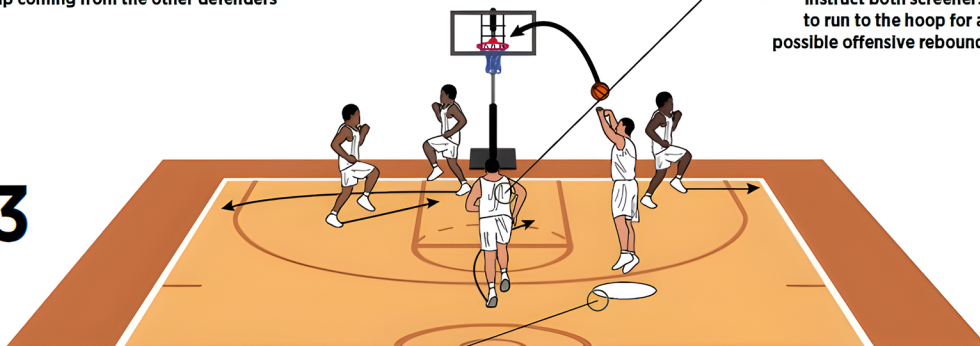
2



This high pick-and-roll action forces the defense into deciding how to guard the screen with no help coming from the other defenders

Instruct both screeners to run to the hoop for a possible offensive rebound

3



If the defense doesn't recover in time, an open 3-point opportunity is available for your best shooter