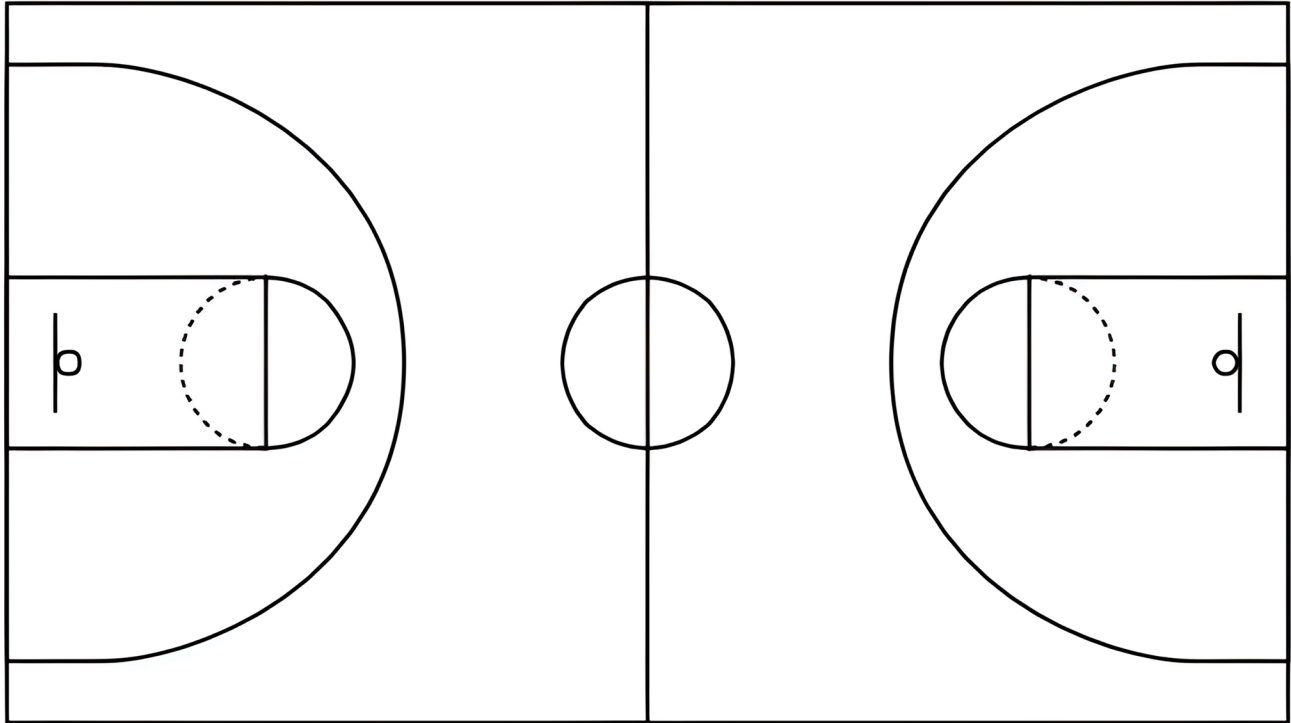


# MULTIPLE-CHOICE QUIZ

## ON BASKETBALL COURT TERMS

Identify the lines in a Basketball court. Choices are given below. On the diagram write only the number.

1.division line 2.Three point line 3.Center circle 4.Free throw line 5.sideline



### MULTIPLE CHOICE - CIRCLE THE LETTER OF THE CORRECT ANSWER.

- HE INVENTED THE TEAM SPORT BASKETBALL IN THE YEAR 1891.  
A.WILLIAM A. MORGAN B.JAMES NAISMITH C.LUTHER H. GULICK D.MICHAEL JORDAN
- IT IS THE MOST PRACTICED SKILL IN BASKETBALL  
A.REBOUNDING B.RUNNING C.PASSING D.SHOOTING
- IT ALLOWS YOU TO MOCE AROUND THE COURT WHILE IN POSSESSION OF THE BALL.  
A.REBOUNDING B.DRIBBLING C.PASSING D.SHOOTING
- ONE OF THE PRIMARY SKILL THAT MAXIMIZES THE INCOLVEMENT OF PLAYERS IN SETTING UP A PLAY.  
A.DRIBBLING B.SHOOTING C.PASSING D.REBOUNDING
- A KIND OF PASS THAT TRAVELS BETWEEN PLAYERS WITHOUT HITTING THE BALL.  
A.AIR PASS B.BOUNCE PASS C.CHEST PASS D.OVERHEAD PASS